

# AUTOVUE VUELINK INTEGRATION FOR SHAREPOINT

## KEY FEATURES AND BENEFITS

### KEY FEATURES

- Web-based document viewing
- Hundreds of supported formats
- Support for Xrefs checked in from a CAD integration or any file system
- Real-time Web collaboration
- 3D Walkthrough
- Work offline
- Browse-and-search files
- Document comparison
- Compliance with SharePoint version control and document approvals
- Precise measurements
- Markups, annotations, and comments saved as distinct overlays
- TIFF rendition generation
- Metadata integration
- Enforcement of existing SharePoint security

### KEY BENEFITS

- View CAD and engineering files within SharePoint
- Extend SharePoint collaboration capabilities
- Standardize visualization on a single solution that supports hundreds of document types
- Improve project communication and document review processes
- Maintain document integrity and ensure a higher level of security
- Reduce costs related to the purchase of expensive software applications
- Provide greater project visibility with support for CAD integrations

*Oracle's AutoVue VueLink Integration for SharePoint adds the powerful document visualization capabilities of Oracle's AutoVue solutions to the Microsoft SharePoint platform and includes support for computer-aided design (CAD) integrations. Together, these applications create an effective document collaboration platform that makes crucial project information accessible to specialists and non-CAD users alike, greatly facilitating document reviews and empowering teams to make informed technical and business decisions.*

### Extend the Value of Your SharePoint Investment

SharePoint provides content management for all business information. AutoVue enterprise visualization solutions enable users to view, annotate, and collaborate on documents without requiring the authoring applications and without altering the original document. AutoVue VueLink Integration for SharePoint unites these two solutions so that users can efficiently open, view, and review any document directly from within the SharePoint environment.

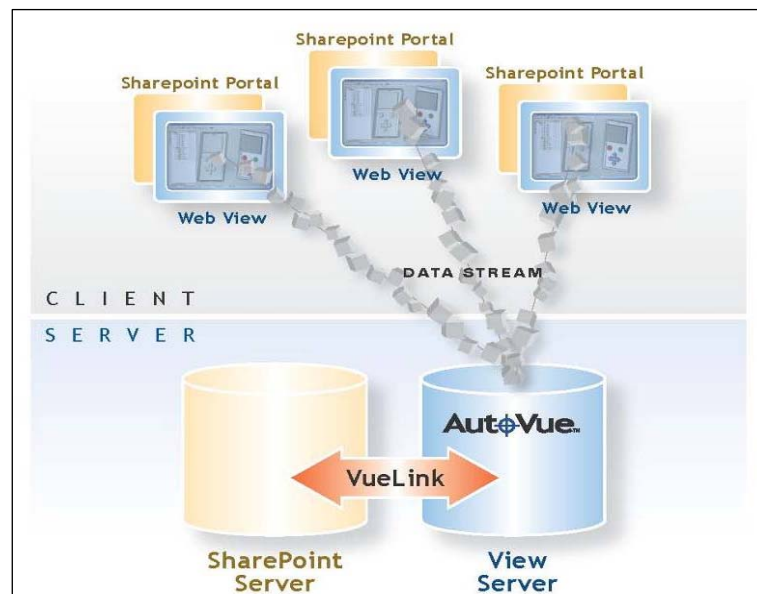


Figure 1: Integration occurs at the server level allowing users to instantly access documents stored in SharePoint for viewing, printing, markup and real-time collaboration.

### Standardize on a Single Visualization Solution

AutoVue enterprise visualization solutions allow users to access, view, and review hundreds of document types including 2D computer-aided design (CAD) drawings, 3D models, printed circuit board (PCB) layouts and schematics, and Microsoft Office documents. By standardizing on a single solution for all visualization requirements, the cost of purchasing, managing, and training employees to use multiple viewing and authoring applications is eliminated. Organizations can greatly reduce their licensing and maintenance costs and simplify their IT infrastructure.

### No Data Conversion Required

By handling data natively, AutoVue enterprise visualization solutions allow users to open, view, and review original documents without undergoing costly and error-prone conversions. Because file conversion is not required, the cost and complexity of maintaining multiple client-side viewers and server-side conversion systems is eliminated, along with the tedious task of maintaining a double set of data such as the original document and the converted/neutral file. Users can be confident that they are always working with the latest version of a file, and that business decisions are based on accurate information.

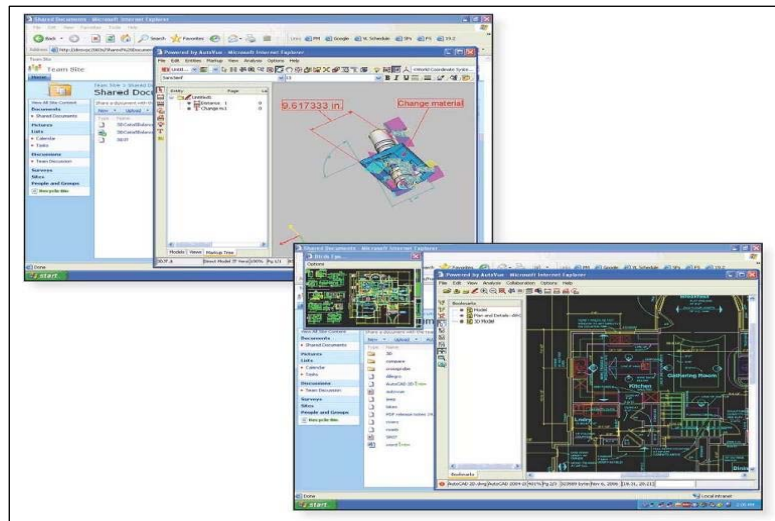


Figure 2: View native documents directly from within SharePoint.

### Find Documents Quickly

AutoVue VueLink Integration for SharePoint provides browse-and-search functions that enable team members to quickly access and view files stored in SharePoint directly from AutoVue enterprise visualization applications.

### View CAD Data Stored in SharePoint

AutoVue provides engineers and non-CAD users with access to CAD data directly from SharePoint. AutoVue VueLink Integration for SharePoint delivers improved engineering project visibility by providing support for CAD integration solutions, such as Organice and Bentley ProjectWise. Users can view, review, and collaborate on 2D CAD files, such as AutoCAD or MicroStation, directly from SharePoint. AutoVue displays the files, including associated external reference files (Xrefs).

**MAXIMIZE PRODUCTIVITY  
WITH ENTERPRISE  
INTEGRATION**
**ORACLE'S AUTOVUE  
ENTERPRISE  
VISUALIZATION  
SOLUTIONS**

AutoVue solutions can be integrated into existing content management, product lifecycle management, or enterprise applications, such as ALM, & Project Planning to name a few. Integrated with existing enterprise systems, AutoVue connects information, people and processes, delivering anytime, anywhere access to vital information and maximizing business process efficiency.

Teams can better collaborate around their engineering, product and asset documents and make sound business decisions, driving innovation and operational efficiency.

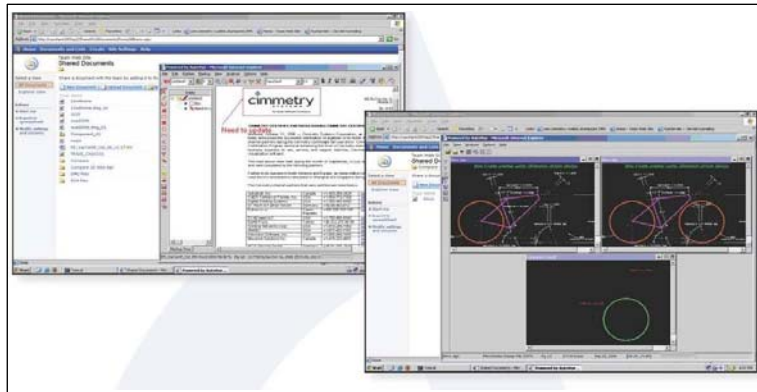
**RELATED PRODUCTS**

- AutoVue Office
- AutoVue 2D Professional
- AutoVue 3D Professional Advanced
- AutoVue EDA Professional
- AutoVue Electro-Mechanical Professional
- AutoVue Mobile
- AutoVue VueLink Integrations

**Improve Communication with Digital Markups and Real-Time Collaboration**

Using AutoVue to view documents stored in SharePoint, users can also add digital markups and annotations to deliver feedback and comments. These markups are created as distinct overlays on top of the original file and saved directly into the SharePoint repository. Reviewers can then review all the markups and annotations associated with a given document, and turn markup layers on and off as needed, selecting only those that they want to view.

AutoVue's built in real-time collaboration capabilities help connect everyone in the global enterprise. Team members, suppliers, partners, and customers can instantly and remotely access, view, and mark up any document and share information regardless of geographical location, technical skills or the applications they use.



**Figure 3: Improve efficiency with information sharing and collaboration.**

**Share Documents Securely**

AutoVue enterprise visualization solutions deliver instant and secure access to original documents without leaving a document footprint on the client's machine. AutoVue VueLink Integration for SharePoint is structured so that the original document, with its proprietary data, is never transferred to the client machine. Only a rendering of a document is transmitted to the client for viewing and markup, thereby safeguarding valuable intellectual property. All markups and annotations are directly saved into SharePoint as a different layer so that the integrity of the original document is maintained.

**Contact Us**

For more information about Oracle's AutoVue VueLink Integration for SharePoint, please visit [oracle.com/applications/autovue](http://oracle.com/applications/autovue), call +1.800.363.5805 or +1.514.905.8400 to speak to an Oracle representative, or email [autovuesales\\_ww@oracle.com](mailto:autovuesales_ww@oracle.com).

Copyright © 2010, Oracle and/or its affiliates. All rights reserved. This document is provided for information purposes only, and the contents hereof are subject to change without notice. This document is not warranted to be error-free, nor is it subject to any other warranties or conditions, whether expressed orally or implied in law, including implied warranties and conditions of merchantability or fitness for a particular purpose. We specifically disclaim any liability with respect to this document, and no contractual obligations are formed either directly or indirectly by this document. This document may not be reproduced or transmitted in any form or by any means, electronic or mechanical, for any purpose, without our prior written permission.

Oracle is a registered trademark of Oracle Corporation and/or its affiliates. Other names may be trademarks of their respective owners.