

# AUTOVUE 2D PROFESSIONAL

## KEY FEATURES AND BENEFITS

### KEY FEATURES

- View hundreds of file types
- Navigate complex 2D CAD documents
- Add markups and comments
- Perform precise 2D measurements
- Compare 2D drawings
- Align and scale 2D drawings in 2D Compare mode
- Perform text searches
- Advanced printing capabilities
- Work Offline
- Hold real time collaboration sessions via the web
- Convert designs to image, PDF, or other neutral formats

### KEY BENEFITS

- Extend the reach of engineering and asset documents to all enterprise users
- Expedite design reviews and minimize reliance on paper
- Improve global communication with multi party real-time web collaboration
- Capture audit trail of decisions, changes and approvals for compliance
- Share documents securely without risking IP

"AutoVue [2D Professional] delivers seamless collaboration among our project teams all over the world. Engineers, architects, contractors, and regulators use AutoVue [2D Professional] to efficiently access, review, and comment on documents and deliver feedback on the fiscal, technical, engineering, environmental, and regulatory issues inherent in each project."

—Lars Fuglsang,  
Senior Project Manager,  
The Ramboll Group

*Oracle's AutoVue 2D Professional provides extended teams with access to critical project and asset information contained in 2D computer-aided design (CAD) and Microsoft Office documents. Its native document viewing, markup, and real-time collaboration capabilities deliver the foundation for an efficient document collaboration process. Users can digitally communicate and track feedback using a single solution and streamline communication throughout the project or asset lifecycle, maximizing productivity and completing projects faster and within budget.*

### Extend Engineering & Asset Documents to All Enterprise Users

AutoVue 2D Professional makes engineering and asset information, including 2D CAD, Graphics, Office and PDF documents, available to all enterprise users, regardless of their technical skills and without requiring costly authoring applications. Whether it is a simple PDF file or a complex CAD drawing, the need to share information is crucial in asset-intensive industries such as Engineering & Construction, Utilities and Oil & Gas. With access to the right documents at the right time team members can make more effective technical and business decisions. Users can also work with their asset and engineering documents while offline. With AutoVue field workers or business travelers can take documents on site or on the road, work offline, and then update their work once they are back on the network.

### Improve Business Processes & Capture Audit Trail

Global team members can use AutoVue 2D Professional to digitally view, review, and provide feedback on engineering and asset documents in a variety of business processes, such as maintenance and repairs, project planning and change management to name a few. By making engineering and asset information available to users in the appropriate business context, an organization can successfully drive business process innovation and improve their bottom line. AutoVue digital markups also capture a reliable audit trail of all decisions, changes and approvals.

### Accelerate Projects with Improved Global Collaboration

AutoVue's built in real-time collaboration capabilities help organizations to connect everyone in the global enterprise, allowing co-workers and partners to communicate as if they were in the same room, even if they are located on the other side of the world. Users can simultaneously review and mark up documents, exchange ideas, assign action items, and resolve issues in real time, accelerating projects and maximizing productivity.

## Share Documents Securely without Risking Intellectual Property

AutoVue 2D Professional allows users to securely share and collaborate on documents with extended teams and outsourced partners without risking a company's valuable intellectual property (IP). AutoVue's unique streaming technology provides access to the full intelligence of documents without transferring the original files to the client desktop; originals never leave the server, and no local temp or cache files are created in the process, ensuring that a company's IP remains protected at all times.

## Support Green Initiatives

AutoVue 2D Professional can complement and support an organization's green initiatives. Instead of depending on printouts that they manually mark up, users can view, review, and annotate digital files. AutoVue can greatly reduce an organization's printing and paper costs, as well as shipping and handling expenses. AutoVue's real-time Web collaboration can also replace face-to-face meetings, resulting in reduced travel costs, greater energy savings, and improved productivity.

## Key Features and Capabilities

**View hundreds of document types.** AutoVue delivers native document viewing capabilities for hundreds of document types, including 2D CAD drawings, graphics, Office or PDF documents—all without the authoring software and without undergoing costly and error-prone document conversions.

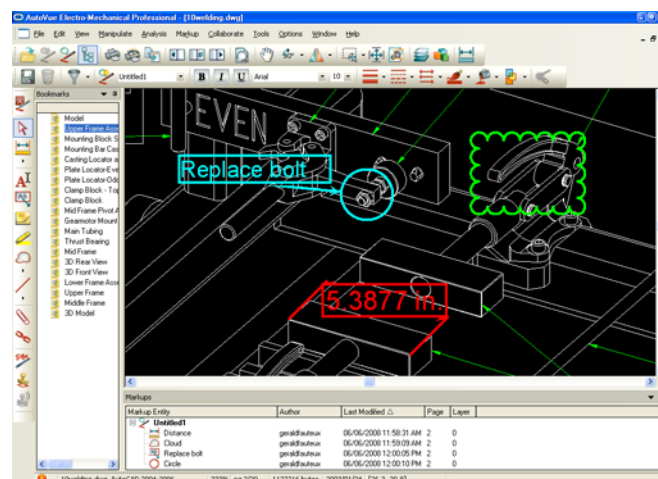


Figure 1: View and markup 2D CAD files.

**Add markups and comments.** Add markups, as well as sound, video and graphic attachments to your documents. Easily manage and track feedback, change requests, and comments across multiple reviewers. Markups are saved as separate layers on top of the original document, which remains intact and is never altered.

**Enable digital sign-off** – Quickly approve markups and comments with digital sign-off. The sign-off stamp contains information about the markup author, date and time of creation. Reviewers can also use AutoVue's IntelliStamp to electronically sign and stamp document sets with attributes from a content management system. With

**MAXIMIZE PRODUCTIVITY  
WITH ENTERPRISE  
INTEGRATION**

ORACLE'S AUTOVUE  
ENTERPRISE  
VISUALIZATION  
SOLUTIONS

AutoVue solutions can be integrated into existing content management, product lifecycle management, or enterprise applications, such as ALM, & Project Planning to name a few. Integrated with existing enterprise systems, AutoVue connects information, people and processes, delivering anytime, anywhere access to vital information and maximizing business process efficiency.

Teams can better collaborate around their engineering and asset documents and make sound business decisions, driving innovation and operational efficiency.

RELATED PRODUCTS

- AutoVue 3D Professional Advanced
- AutoVue EDA Professional
- AutoVue Electro-Mechanical Professional
- AutoVue Office
- AutoVue Mobile
- AutoVue VueLink Integrations

IntelliStamp, users can trigger workflow actions directly from within documents reviewed in AutoVue, allowing for workflow automation and improved business processes.

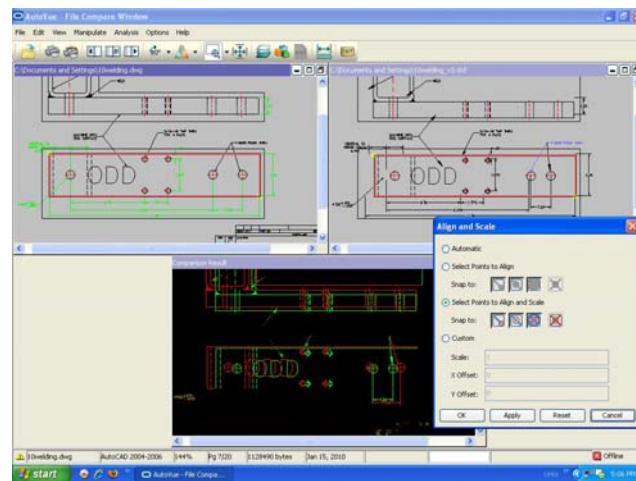
**Convert documents to TIFF or PDF** - For organizations that need to comply with industry or corporate standards, AutoVue provides the ability to generate TIFF or PDF renditions of your documents.

**2D CAD Features and Capabilities**

**Navigate complex CAD documents.** Locate the desired area on a drawing quickly using three levels of zoom – Pan and Zoom Window, Magnifying Window, and Magnifying Glass.

**Perform precise 2D measurements.** Speed up design reviews by performing precise measurements including distance, areas, angles, arcs, and more.

**2D Compare.** Determine what has been added, removed, or unchanged in designs by comparing 2D drawings. Accurately align and scale drawings in 2D compare.



**Figure 2: Align & scale CAD drawings in 2D compare mode**

**Text Search.** Search drawings for keywords to locate text in files.

**Advanced printing.** Save time by automating the printing process—batch print files, customize print settings, and save printing configurations.

Copyright © 2010, Oracle and/or its affiliates. All rights reserved.  
This document is provided for information purposes only, and the contents hereof are subject to change without notice. This document is not warranted to be error-free, nor is it subject to any other warranties or conditions, whether expressed orally or implied in law, including implied warranties and conditions of merchantability or fitness for a particular purpose. We specifically disclaim any liability with respect to this document, and no contractual obligations are formed either directly or indirectly by this document. This document may not be reproduced or transmitted in any form or by any means, electronic or mechanical, for any purpose, without our prior written permission.  
Oracle is a registered trademark of Oracle Corporation and/or its affiliates. Other names may be trademarks of their respective owners.